

**Water Samples for Veliger Enumeration**  
April 17, 2007

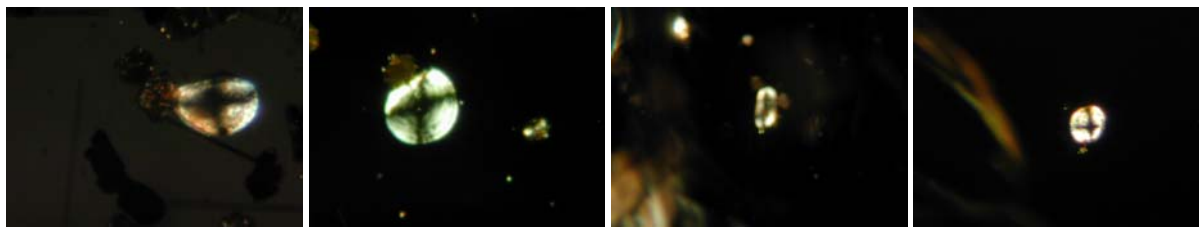
This is a summary of the results of water samples that were assessed for veliger enumeration by the US Bureau of Reclamation in April 2007. The samples were collected from Sandy Point, Echo Bay, Temple Bar, and Hoover Dam, Placer Cove, Cottonwood Cove, Katherine Landing, and Willow Beach.

Results:

<b>Location</b>		<b>Collection Date</b>	<b>Sample type</b>	<b>Total sample volume (liters)</b>	<b>Veliger count (average/liter)</b>
Sandy Point		April 12	4 x 30m plankton tow	2,120.6	0.09
Echo Bay		April 10	4 x 30m plankton tow	2,120.6	0.4
Temple Bar		April 12	4 x 30m plankton tow	2,120.6	0.2
Hoover Dam	<i>Deep tow (denatured alcohol)</i>	April 11	8 x 30m plankton tow	4,241.2	0.9
	<i>Deep tow (ethyl alcohol)</i>	April 11	8 x 30m plankton tow	4,241.2	0.8
	<i>Shallow tow</i>	April 11	6 x 10m plankton tow	1,060.3	3.2
Willow Beach		April 10	1 x 30m plankton tow	530.2	0.9
Placer Cove		April 10	2 x 15m plankton tow	530.2	0.6
Cottonwood Cove		April 10	1 x 30m plankton tow	530.2	3.8
Katherine Landing		April 10	1 x 30m plankton tow	530.15	1.0

All samples were generally clear and contained some algae, a few organisms, and numerous cells that were either ostracods or veligers. This veliger count only reflects the positively identified veligers and questionable cells were not included in the count.

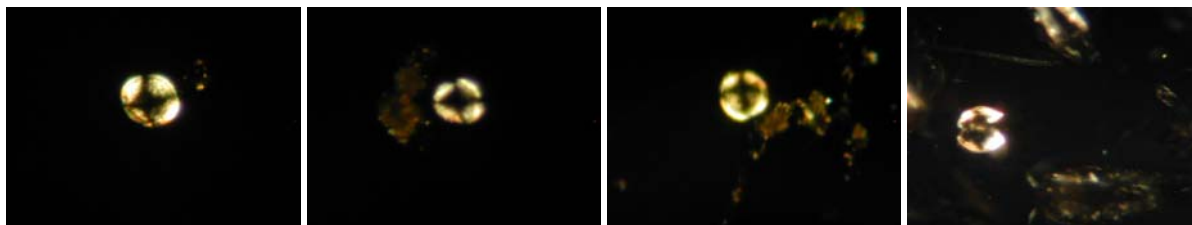
Annex 1. Photo documentation



Photographs of veligers found in the April 10th-12th, 2007 water samples. From left to right: Sandy Point, Echo Bay, Temple Bar, and Hoover Dam – shallow tow.



Photographs of veligers found in the April 11th, 2007 water samples. From left to right: Hoover Dam-deep tow denatured, Hoover Dam-deep tow ethanol, and an ostracod from the Hoover Dam-deep tow-ethanol.



Photographs of veligers found in the April 10, 2007 water samples. From left to right: Willow Beach Marina, Placer Cove, Cottonwood Cove, and Katherine Landing.